

Personal Information

Office Phone: [+90 0462 377 2570](tel:+9004623772570)

Email: gguner@ktu.edu.tr

Web: <https://avesis.ktu.edu.tr/gguner>

International Researcher IDs

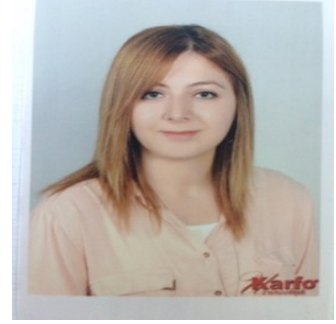
ScholarID: RcNULIUAAAAJ

ORCID: 0000-0001-9453-3809

Publons / Web Of Science ResearcherID: AAK-1174-2021

ScopusID: 57193311652

Yoksis Researcher ID: 186806



Education Information

Doctorate, Karadeniz Technical University, Fen Bilimler Enstitüsü, Matematik,
Turkey 2011 - 2017

Postgraduate, Karadeniz Technical University, Fen Bilimler Enstitüsü, Matematik,
Turkey 2010 - 2011

Postgraduate, Ankara University, Fen Bilimler Enstitüsü, Matematik, Turkey 2008 -
2010

Undergraduate, Ankara University, Fen Fakültesi, Matematik, Turkey 2004 - 2008

Foreign Languages

English, C2 Mastery

Research Areas

Biological Modelling, Mathematics, Differential Geometry, Geometry, Manifolds and Cell Complexes, Natural Sciences

Academic Titles / Tasks

Associate Professor, Karadeniz Technical University, Fen Fakültesi, Matematik, 2023 - Continues

Karadeniz Technical University, Fen Fakültesi, Matematik, 2018 - Continues

Assistant Professor, Karadeniz Technical University, Fen Fakültesi, Matematik, 2017 - 2018

Research Assistant, Karadeniz Technical University, Fen Fakültesi, Matematik, 2010 - 2017

Courses

Yarı-Riemann Manifoldsı, Doctorate, 2023 - 2024

Hareket Geometrisi ve Kuaterniyonlar Teorisi, Doctorate, 2023 - 2024

Yarı Riemann Manifolları, Doctorate, 2023 - 2024
Hareket Geometrisi ve Kuaterniyonlar Teorisi, Doctorate, 2023 - 2024
Lightlike Eğriler ve Hiperyüzeyler, Postgraduate, 2020 - 2021
Analitik Geometri, Undergraduate, 2018 - 2019
Dejenere Manifollar, Postgraduate, 2018 - 2019
Genel Matematik II, Undergraduate, 2017 - 2018
Matematik I, Undergraduate, 2018 - 2019

Advising Theses

Tuğ G., Ricci solitons on lightlike hypersurfaces, Postgraduate, A.ARFAH(Student), 2021

Published journal articles indexed by SCI, SSCI, and AHCI

- I. **Elliptical kinematics of the accretive surface growth**
Özdemir Z., TUĞ G.
Turkish Journal of Mathematics, vol.46, no.3, pp.728-745, 2022 (SCI-Expanded)
- II. **Accretive Darboux growth in Lorentz–Minkowski spacetime**
TUĞ G., Özdemir Z., GÖK İ.
Mathematical Methods in the Applied Sciences, vol.44, no.8, pp.6857-6875, 2021 (SCI-Expanded)
- III. **Minimal twist accretive growth with spatial curve evolution**
TUĞ G.
Mathematical Methods in the Applied Sciences, 2021 (SCI-Expanded)
- IV. **Accretive growth kinematics via null evolution curve**
ÖZDEMİR Z., TUĞ G.
MATHEMATICAL METHODS IN THE APPLIED SCIENCES, vol.43, no.18, pp.10430-10440, 2020 (SCI-Expanded)
- V. **Notes on the Lightlike Hypersurfaces Along Spacelike Submanifolds**
Tug G., Ekmekci F. N.
UKRAINIAN MATHEMATICAL JOURNAL, 2019 (SCI-Expanded)
- VI. **Accretive Darboux growth along a space curve**
TUĞ G., Ozdemir Z., GÖK İ., Ekmekci F. N.
APPLIED MATHEMATICS AND COMPUTATION, vol.316, pp.516-524, 2018 (SCI-Expanded)
- VII. **Accretive growth kinematics in Minkowski 3-space**
TUĞ G., Ozdemir Z., AYDIN S. H., EKMEKÇİ F. N.
INTERNATIONAL JOURNAL OF GEOMETRIC METHODS IN MODERN PHYSICS, vol.14, no.5, 2017 (SCI-Expanded)

Articles Published in Other Journals

- I. **CONSTANT PSEUDO-ANGLE LIGHTLIKE SURFACES**
TUĞ G.
COMMUNICATIONS FACULTY OF SCIENCES UNIVERSITY OF ANKARA-SERIES A1 MATHEMATICS AND STATISTICS, vol.72, no.3, pp.737-760, 2023 (ESCI)
- II. **Canal Surfaces Through a Null Quaternionic Spine Curve**
TUĞ G.
Bilecik Şeyh Edebali Üniversitesi Fen Bilimleri Dergisi, vol.9, no.2, pp.721-729, 2022 (Peer-Reviewed Journal)
- III. **On the spherical indicatrices of a timelike curve as generalized helices in Minkowski 3-space**
ARFAH A., TUĞ G.
Konuralp Journal of Mathematics, vol.10, no.1, pp.50-54, 2022 (Peer-Reviewed Journal)

- IV. **Construction of the Null Scrolls along Lightlike Submanifolds in $R_{-\epsilon}(m+n)$**
 TUĚ G., Ekmekci F. N.
 INTERNATIONAL ELECTRONIC JOURNAL OF GEOMETRY, vol.10, no.1, pp.31-38, 2017 (ESCI)
- V. **On the Special Curves in Minkowski 4 Spacetime**
 TUĚ G., Ekmekci N.
 Mathematica Aeterna, vol.4, pp.863-867, 2014 (Peer-Reviewed Journal)
- VI. **On the spherical curves and Bertrand curves in Minkowski-3 space**
 TUĚ G., Ekmekci N.
 Journal of Mathematical and Computational Science, vol.2, pp.898-906, 2012 (Peer-Reviewed Journal)

Refereed Congress / Symposium Publications in Proceedings

- I. **Accretive growth kinematics with elastic curves**
 TUĚ G.
 2nd International Conference on Applied Engineering and Natural Sciences (ICAENS 2022), Konya, Turkey, 10 - 13 March 2022, pp.230-236
- II. **ON THE EVOLUTION OF A PLANE CURVE USING HYPERBOLICAL KINEMATICS**
 TUĚ G.
 8th International IFS and Contemporary Mathematics Conference (IFSCOM2022), Mersin, Turkey, 16 - 19 June 2022, pp.49-50
- III. **A study on the lightlike surfaces and pseudo angles**
 TUĚ G.
 5th International Conference on Mathematical Advances and Applications (ICOMAA-2022), İstanbul, Turkey, 11 - 14 May 2022
- IV. **Accretive Growth Kinematics via Rotation Minimizing Frame**
 TUĚ G.
 8th International Conference on Recent Advances in Pure and Applied Mathematics (ICRAPAM2021), Bodrum, Turkey, 24 - 27 September 2021
- V. **η -Ricci solitons on lightlike hypersurfaces**
 TUĚ G., ARFAH A.
 18th International Geometry Symposium, Malatya, Turkey, 12 - 13 July 2021
- VI. **Accretive Darboux Growth in Minkowski Spacetime**
 TUĚ G., ÖZDEMİR Z., GÖK İ.
 International E-Conference on Mathematical Advances and Application (ICOMAA2020), İstanbul, Turkey, 24 - 27 June 2020
- VII. **Surface Growth Kinematics in Galilean Space**
 ÖZDEMİR Z., TUĚ G., GÖK İ., EKMEKÇİ F. N.
 16th International Geometry Symposium 2018, Manisa, Turkey, 4 - 07 July 2018
- VIII. **Accretive Darboux Growth Along a Space curve**
 TUĚ G., Özdemir Z., Ekmekci F. N., Gök İ.
 15. Geometri Sempozyumu, Amasya, Turkey, 3 - 06 July 2017, pp.79
- IX. **Characterization of Null Scrolls in $R_{-\nu}^m+n$**
 TUĚ G., EKMEKÇİ F. N.
 4th INTERNATIONAL EURASIAN CONFERENCE ON MATHEMATICAL SCIENCES AND APPLICATIONS (IECMSA2015), Atina, Greece, 31 August - 03 September 2015, pp.183
- X. **Surface Growth Kinematics in Minkowski 3 Space**
 TUĚ G., Özdemir Z., Ekmekci N.
 IECMSA 2015, Athens, Greece, 31 August - 03 September 2015, pp.292
- XI. **Characterization of Null Scrolls in R^m+n**
 TUĚ G., Ekmekci N.

IECMSA 2015, Athens, Greece, 31 August - 03 September 2015, pp.183

XII. Lightlike Altmanifolds Boyunca Null Scroll Hiperyüzeyler

TUĞ G., Ekmekci N.

13. Geometri Sempozyumu, İstanbul, Turkey, 27 - 30 July 2015, pp.89

XIII. On the Lightlike Ruled Hypersurfaces Based on Spacelike Submanifolds

TUĞ G., Ekmekci N.

IECMSA, Vienna, Austria, 25 - 28 August 2014, pp.326-327

XIV. Structure of the lightlike hypersurfaces along spacelike submanifolds

TUĞ G., Ekmekci N.

Karatekin Mathematics Days 2014, Çankırı, Turkey, 11 - 13 June 2014, pp.214

XV. A Study on the Spherical Curves and Bertrand Curves in Minkowski 4 Spacetime

GÜNER G., EKMEKÇİ N., SAĞIROĞLU Y.

1st International Eurasian Conference on Mathematical Sciences and Applications, Prishtine, Kosova, 3 - 07 September 2012, pp.338

XVI. A Study on the Spherical Null Curves and Bertrand Curves in Minkowski 4-Spacetime

TUĞ G., Ekmekci N., SAĞIROĞLU Y.

IECMSA 2012, Prishtine, Kosova, 3 - 07 September 2012, pp.338

XVII. Spherical curves and Bertrand Curves in 3 Dimensional Minkowski Space

TUĞ G., Ekmekci N.

IX. Geometri Sempozyumu, Samsun, Turkey, 7 - 10 June 2011, pp.60-61

XVIII. Küresel Timelike Eğriler ve Bertrand Eğrileri

TUĞ G., Ekmekci N.

9. Matematik Sempozyumu Sergi ve Şenlikleri, Trabzon, Turkey, 20 - 22 October 2010, pp.185-186

Metrics

Publication: 32

Citation (WoS): 19

Citation (Scopus): 21

H-Index (WoS): 2

H-Index (Scopus): 3