

## Personal Information

**Email:** mtuti@ktu.edu.tr

**Web:** <https://avesis.ktu.edu.tr//mtuti>

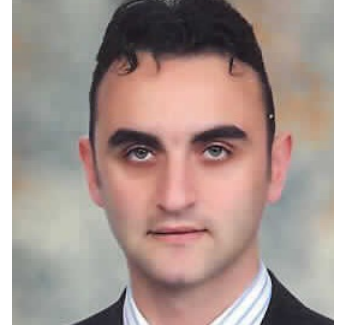
## International Researcher IDs

ORCID: 0000-0002-2309-3735

Publons / Web Of Science ResearcherID: A-1406-2018

ScopusID: 55533665700

Yoksis Researcher ID: 152747



## Education Information

Doctorate, Karadeniz Technical University, Sürmene Deniz Bilimleri Fakültesi,  
Gemi İnşaatı ve Gemi Makineleri Mühendisliği, Turkey 2012 - 2022

Postgraduate, Karadeniz Technical University, Sürmene Deniz Bilimleri Fakültesi,  
Gemi İnşaatı Ve Gemi Makineleri Mühendisliği/Gemi Makineleri, Turkey 2010 -  
2012

Undergraduate, Karadeniz Technical University, Sürmene Deniz Bilimleri Fakültesi,  
Gemi İnşaatı ve Gemi Makineleri Mühendisliği, Turkey 2004 - 2008

## Foreign Languages

English, B2 Upper Intermediate

German, A1 Beginner

## Certificates, Courses and Trainings

Other, Uluslararası Fon Kaynaklarına Başvuru Kapasitesinin Artırılması, Karadeniz Teknik Üniversitesi/Teknoloji  
Transferi Uygulama ve Araştırma Merkezi, 2023

Education Management and Planning, TÜBİTAK 2237 nolu "Mühendislik ve Teknolojik Bilimlerde Proje Hazırlama  
Eğitimi", KTÜ, 2015

## Dissertations

Doctorate, EXPERIMENTAL AND NUMERICAL INVESTIGATION OF THE EFFECTS OF ADDING WATER TO THE INTAKE  
AIR ON ENGINE PERFORMANCE, COMBUSTION AND EXHAUST EMISSIONS IN DIESEL ENGINES, Karadeniz Technical  
University, Sürmene Deniz Bilimleri Fakültesi, Gemi İnşaatı ve Gemi Makineleri Mühendisliği, 2022

Postgraduate, Dizel Motorlarında Emme Havası İçerisine Su Eklenmesinin Motor Karakteristikleri Ve Eksoz Emisyonları  
Üzerindeki Etkilerinin Deneysel İncelenmesi, Karadeniz Technical University, Sürmene Deniz Bilimleri Fakültesi, Gemi  
İnşaatı Ve Gemi Makineleri Mühendisliği/Gemi Makineleri, 2012

## Research Areas

Mechanical Engineering, Energy, Alternative Energy Resources, Thermodynamics, Fuels and Combustion, Internal Combustion Engines, Engineering and Technology

## Courses

Gemi Makina Dairesi Yerleşimi, Undergraduate, 2024 - 2025

Gemi Yardımcı Makineleri, Undergraduate, 2024 - 2025

Gemi Yakıtları ve Yanma, Undergraduate, 2023 - 2024

Gemi Mühendisliğine Giriş, Undergraduate, 2023 - 2024

Gemi Makinaları, Undergraduate, 2023 - 2024

## Published journal articles indexed by SCI, SSCI, and AHCI

- I. **EXPERIMENTAL INVESTIGATION OF THE EFFECTS OF WATER ADDITION INTO THE INTAKE AIR ON COMBUSTION PARAMETERS, ENERGY BALANCE AND DEVELOPING AN EMPIRICAL COMBUSTION DURATION RELATION IN AUTOMOBILE DIESEL ENGINE BİR OTOMOBİL DİZEL MOTORUNDA EMME HAVASINA SU EKLENMESİNİN YANMA PARAMETRELERİ VE ENERJİ DENGESİ ÜZERİNDEKİ ETKİLERİNİN DENEYSEL İNCELENMESİ VE YANMA SÜRESİ İÇİN AMPİRİK BAĞINTI GELİŞTİRME**  
TUTİ M., ŞAHİN Z., Durgun O.  
Isi Bilimi Ve Tekniği Dergisi/ Journal of Thermal Science and Technology, vol.43, no.2, pp.217-232, 2023 (SCI-Expanded)
- II. **Experimental investigation of the effects of water adding to the intake air on the engine performance and exhaust emissions in a DI automotive diesel engine**  
ŞAHİN Z., TUTİ M., Durgun O.  
FUEL, vol.115, pp.884-895, 2014 (SCI-Expanded)

## Articles Published in Other Journals

- I. **Thermodynamic Diesel Engine Cycle Modeling and Prediction of Engine Performance Parameters**  
TUTİ M., ŞAHİN Z., Durgun O.  
Gemi ve Deniz Teknolojisi (GMO Journal of Ship and Marine Technology), vol.-, no.207, pp.14-26, 2017 (Peer-Reviewed Journal)

## Books & Book Chapters

- I. **Chapter 4.4: An Experimental Study on the Effects of Inlet Water Injection of Diesel Engine Heat Release Rate, Fuel Consumption, Opacity, and NOx Emissions**  
Şahin Z., Tuti M., Durgun O.  
in: Exergetic, Energetic and Environmental Dimensions, ibrahim Dincer,C. Ozgur Colpan and Onder Kizilkan, Editor, Elsevier Science, Oxford/Amsterdam , Connecticut, pp.981-996, 2018

## Refereed Congress / Symposium Publications in Proceedings

- I. **Experimental Investigation of the Effects of Water Addition into the Intake Air on Cylinder Pressure, Temperature, Heat Release Rate and Combustion Duration in an Automotive Diesel Engine**  
Tuti M., Şahin Z., Durgun O.  
Uluslararası Katılımlı 23. Isı Bilimi ve Tekniği Kongresi (ULIBTK 2021), Gaziantep, Turkey, 8 - 10 September 2021,

vol.1, pp.785-795

**II. EXPERIMENTAL INVESTIGATION OF THE EFFECTS OF INLET WATER INJECTION ON ENGINE PERFORMANCE AND EXHAUST EMISSIONS IN A DI DIESEL ENGINE**

Şahin Z., Tuti M., Durgun O.

14. Uluslararası Yanma Sempozyumu, Karabük, Turkey, 25 - 27 April 2018, vol., pp.1-10

**III. Thermodynamic diesel engine cycle modeling and prediction of engine performance parameters**  
TUTİ M., ŞAHİN Z., DURGUN O.

1. Uluslararası Gemi ve Deniz Teknolojisi Kongresi (GMO-SHIPMAR), İstanbul, Turkey, 8 - 09 December 2016

**IV. EXPERIMENTAL INVESTIGATION OF THE EFFECTS OF WATER ADDING TO THE INTAKE AIR ON DIESEL ENGINE PERFORMANCE AND HEAT RELEASE ANALYSIS**

DURGUN O., ŞAHİN Z., TUTİ M.

8th International Exergy, Energy and Environment Symposium (IEEES-8), May 1-4, 2016, Antalya, Turkey, 1 - 04 May 2016

**V. EXPERIMENTAL INVESTIGATION OF THE EFFECTS OF WATER ADDING TO THE INTAKE AIR ON ENGINE PERFORMANCE AND HEAT RELEASE ANALYSIS**

ŞAHİN Z., Durgun O., TUTİ M.

8th International Exergy, Energy and Environment Sym., Antalya, Turkey, 1 - 04 May 2016, vol., pp.730-736

**VI. Bir Otomobil dizel Motorunda Emme Havaına Su püskürtülmesinin Motor Performansı ve Eksoz Gazları Üzerindeki Etkilerinin Deneysel İncelenmesi**

ŞAHİN Z., TUTİ M., DURGUN O.

12. Uluslar Arası Yanma Sempozyumu, Kocaeli, Turkey, 24 - 26 May 2012, vol., pp.126-134

## Metrics

Publication: 10

Citation (WoS): 80

Citation (Scopus): 105

H-Index (WoS): 1

H-Index (Scopus): 1

## Congress and Symposium Activities

14. Uluslararası Yanma Sempozyumu, Attendee, Karabük, Turkey, 2018

1. Uluslararası Gemi ve Deniz Teknolojisi Kongresi (GMO-SHIPMAR 2016), Attendee, İstanbul, Turkey, 2016

8th International Exergy, Energy and Environment Symposium (IEEES-8), Attendee, Antalya, Turkey, 2016

12th International Combustion Symposium, Attendee, Kocaeli, Turkey, 2012

## Non Academic Experience

Business Establishment Private, Samsun Terme Tersanesi