

Karadeniz Technical University
Engineering Softwares
Computer Aided Machine Design
ANSYS Electronics Maxwell

Research Assistant
Furkan Muhammed KIRIKCI





Contents

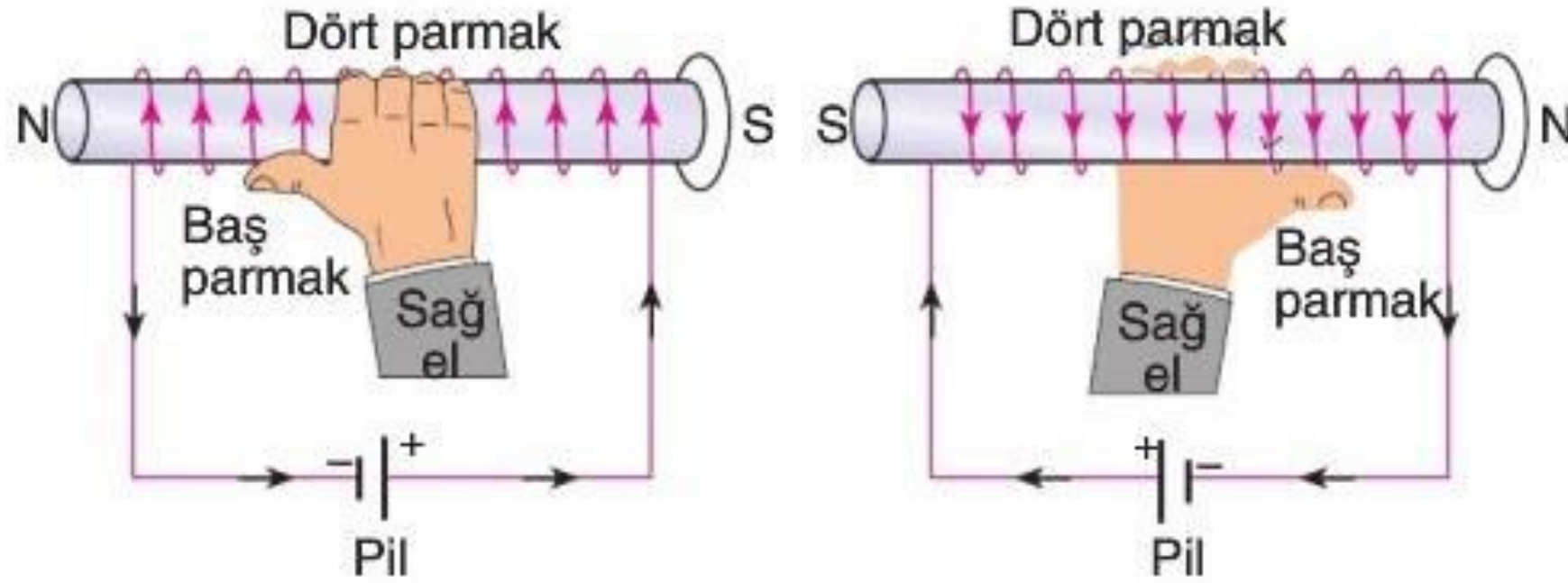
- ✓ Electrical Laws
- ✓ Electrical Machines
- ✓ Asynchronous Motor
- ✓ Standards Of Machine Design
- ✓ Electric Motor Design Process
- ✓ Machine Design Companies
- ✓ Computer Aided Design
- ✓ Finite Element Method
- ✓ ANSYS Electronics Maxwell

Electrical Laws

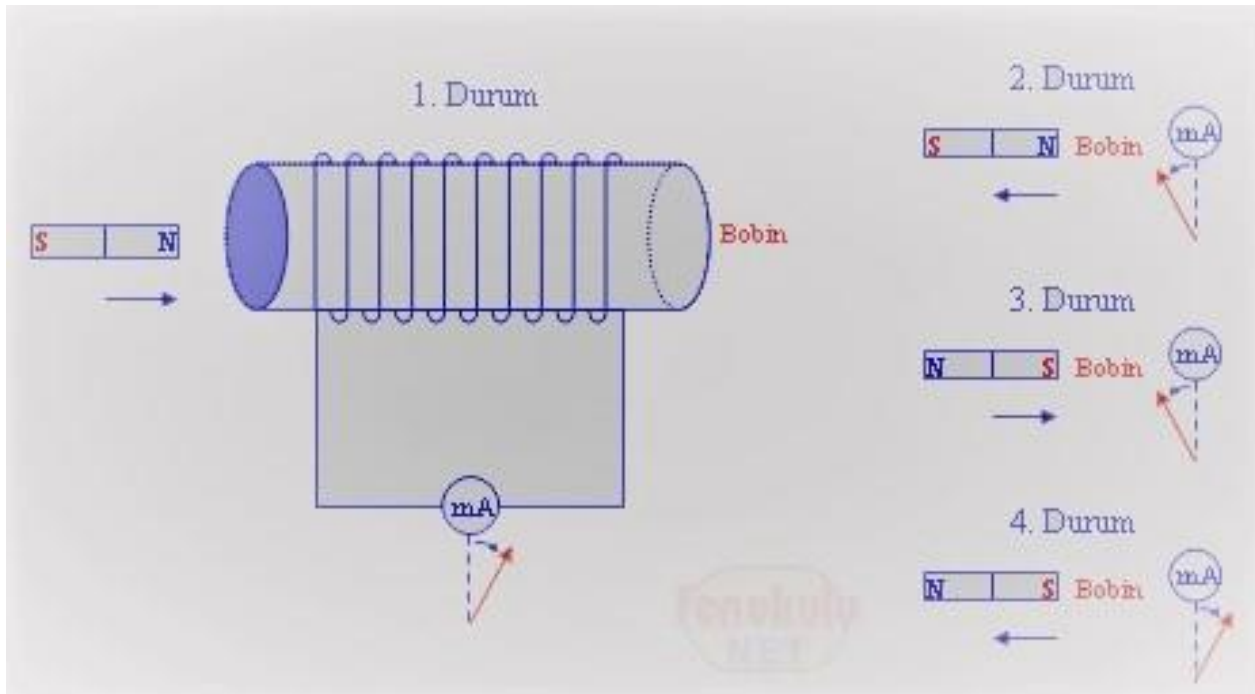
Ampere
Law

Induction
Law

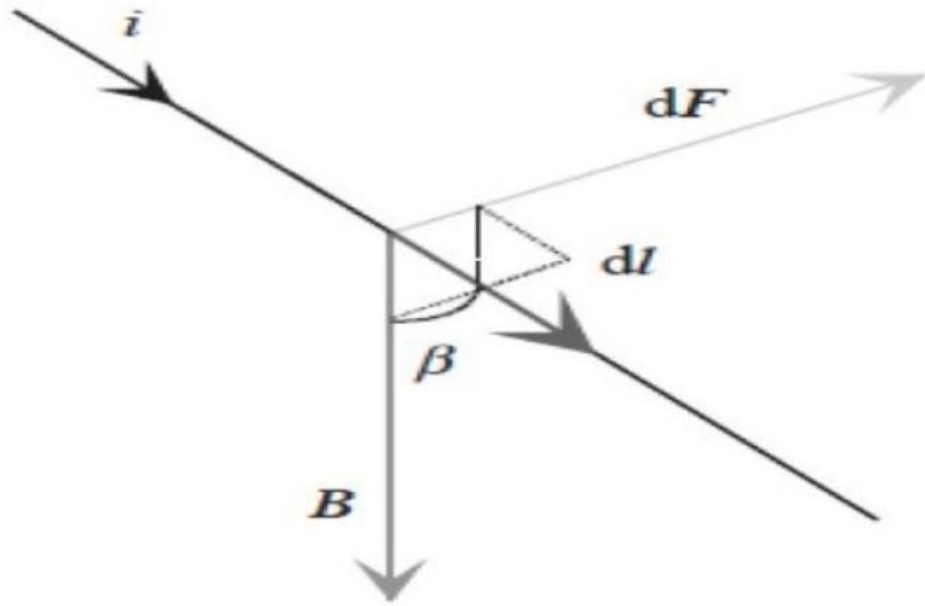
Biot-Savart
Law



Ampere Law



Induction Law



Biot-Savart Law

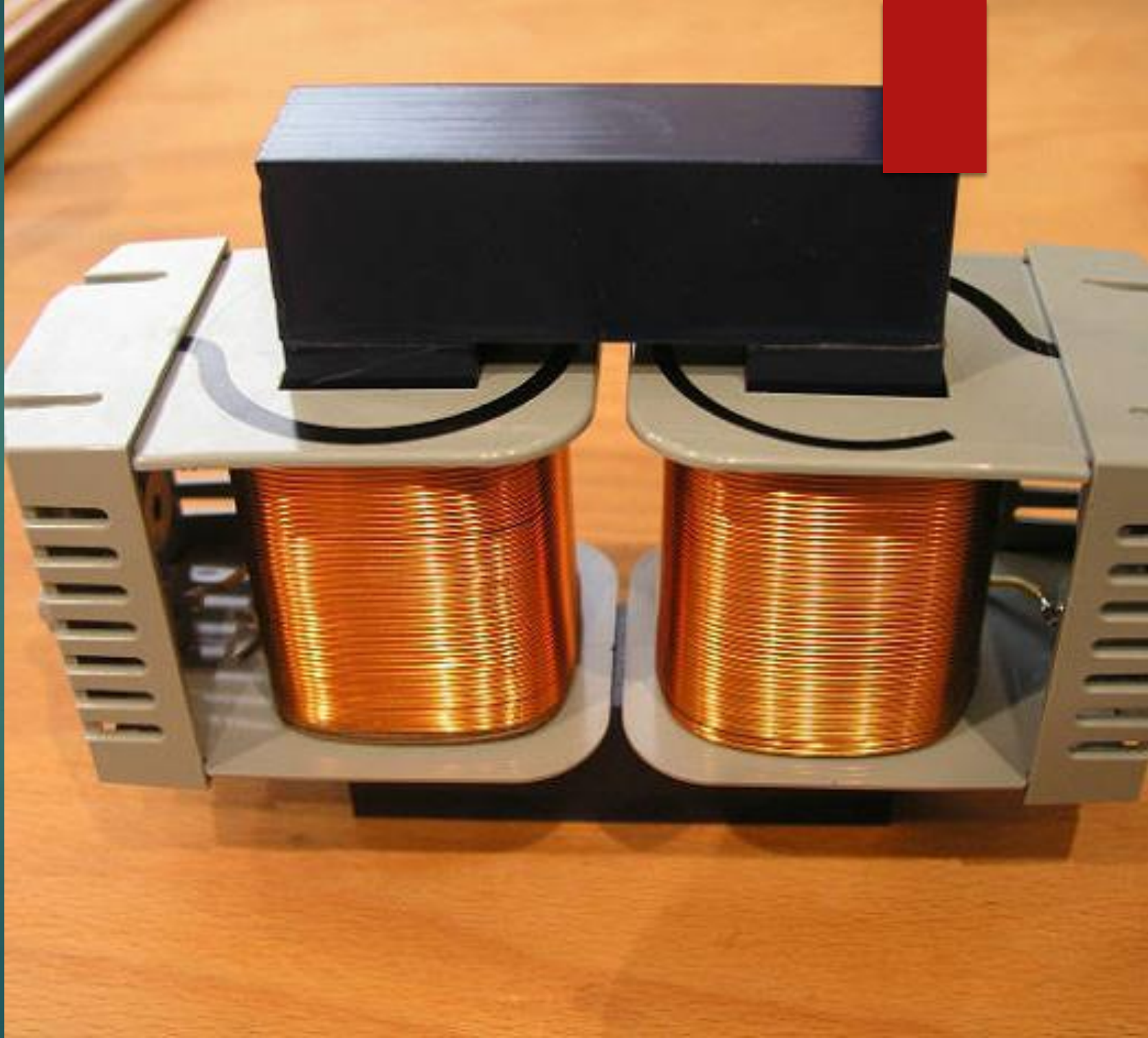
Electrical Machines

TRANSFORMERS

ELECTRIC MOTORS

GENERATORS

TRANSFORMERS





ELECTRIC MOTORS



GENERATORS

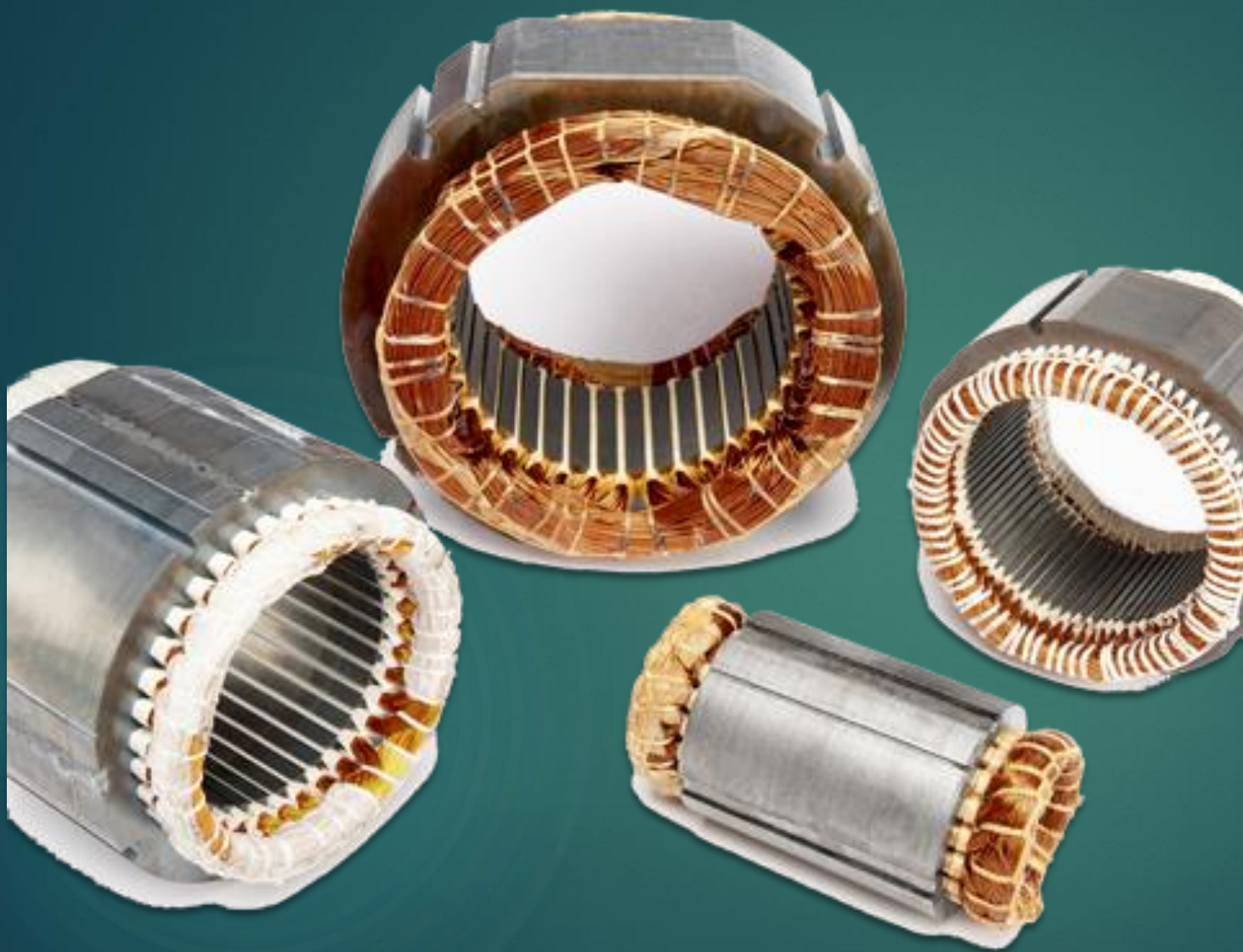


Asynchronous Motor

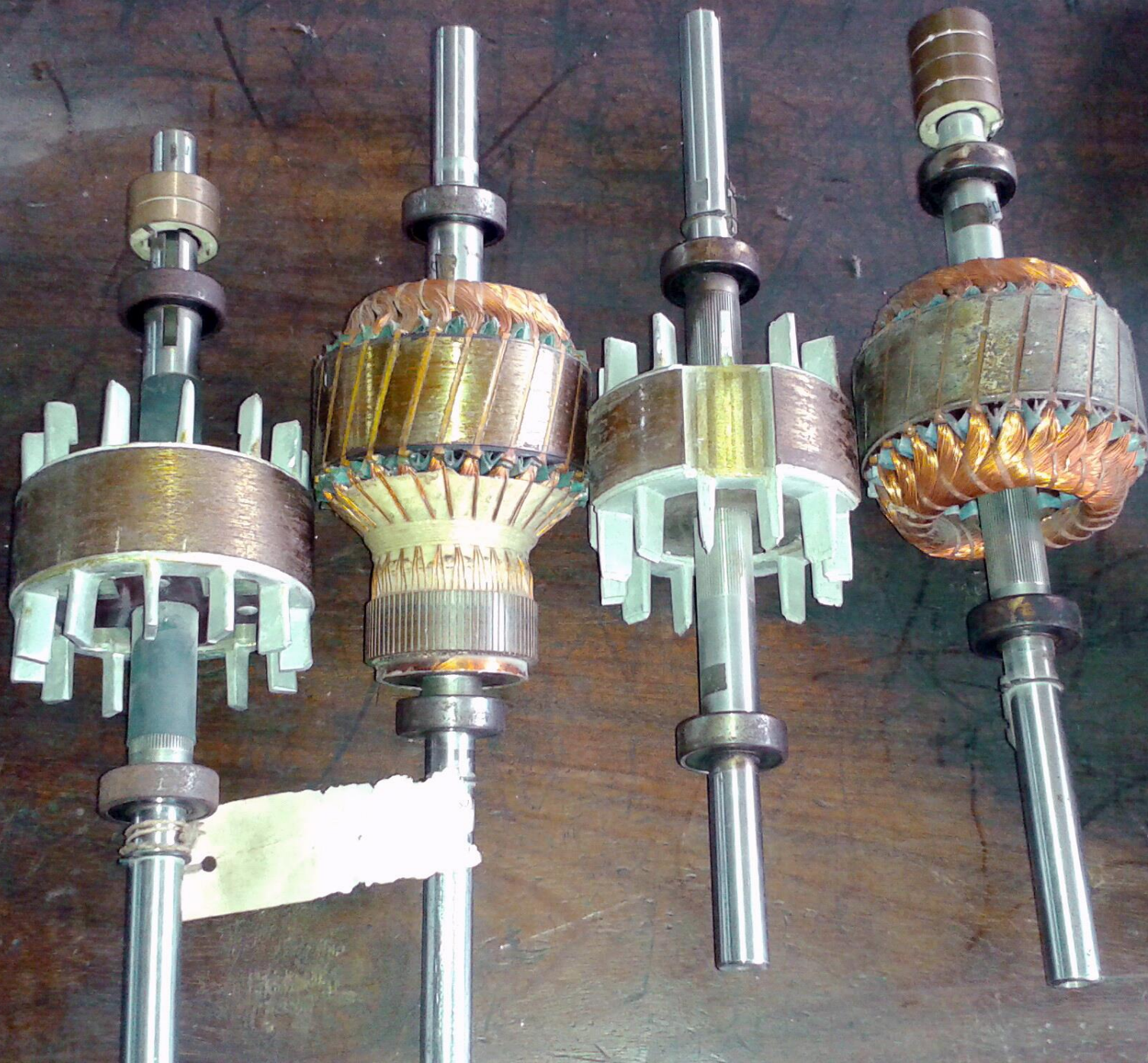
- ▶ STATOR

- ▶ ROTOR

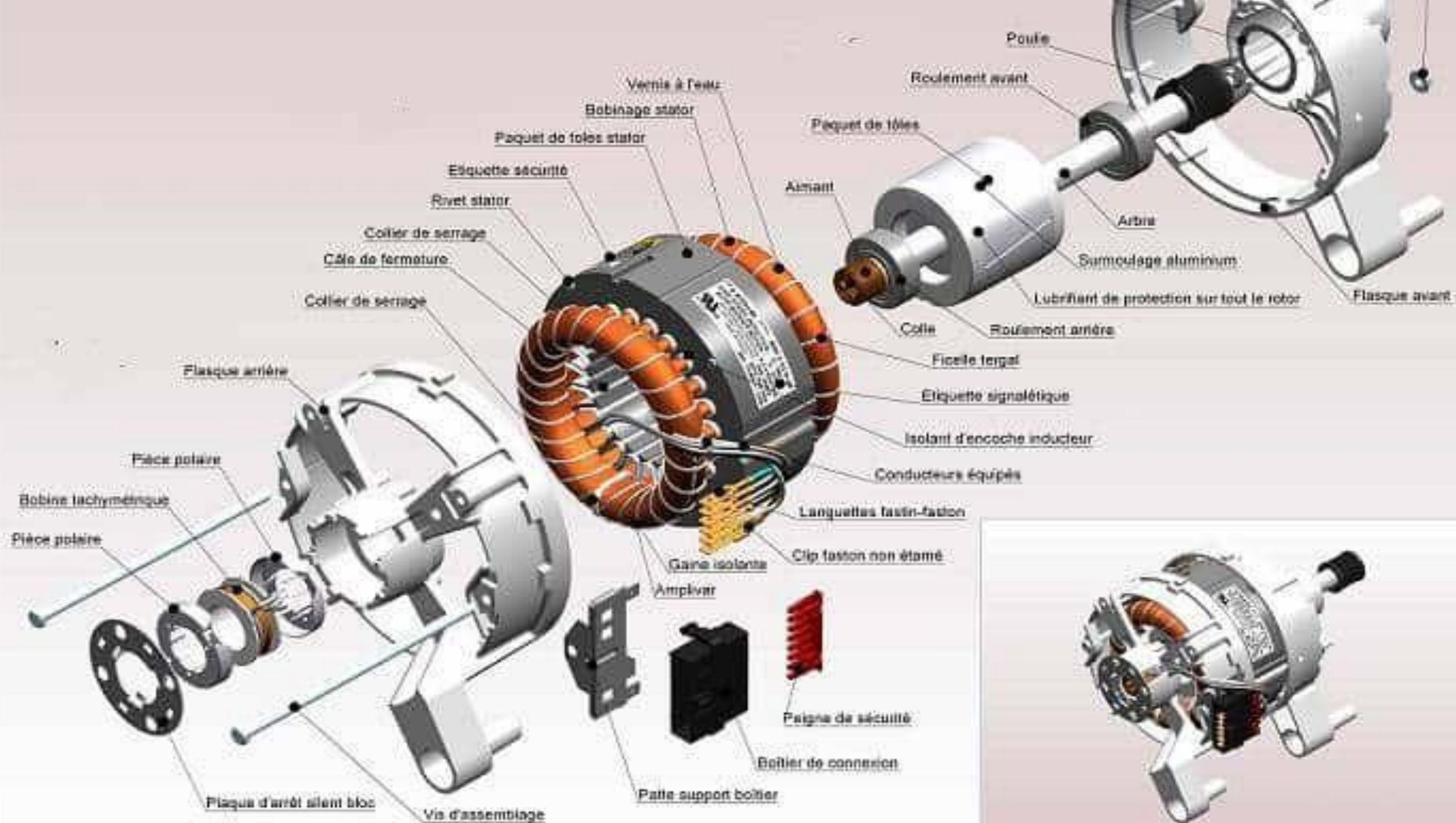
- ▶ MECHANICAL PARTS

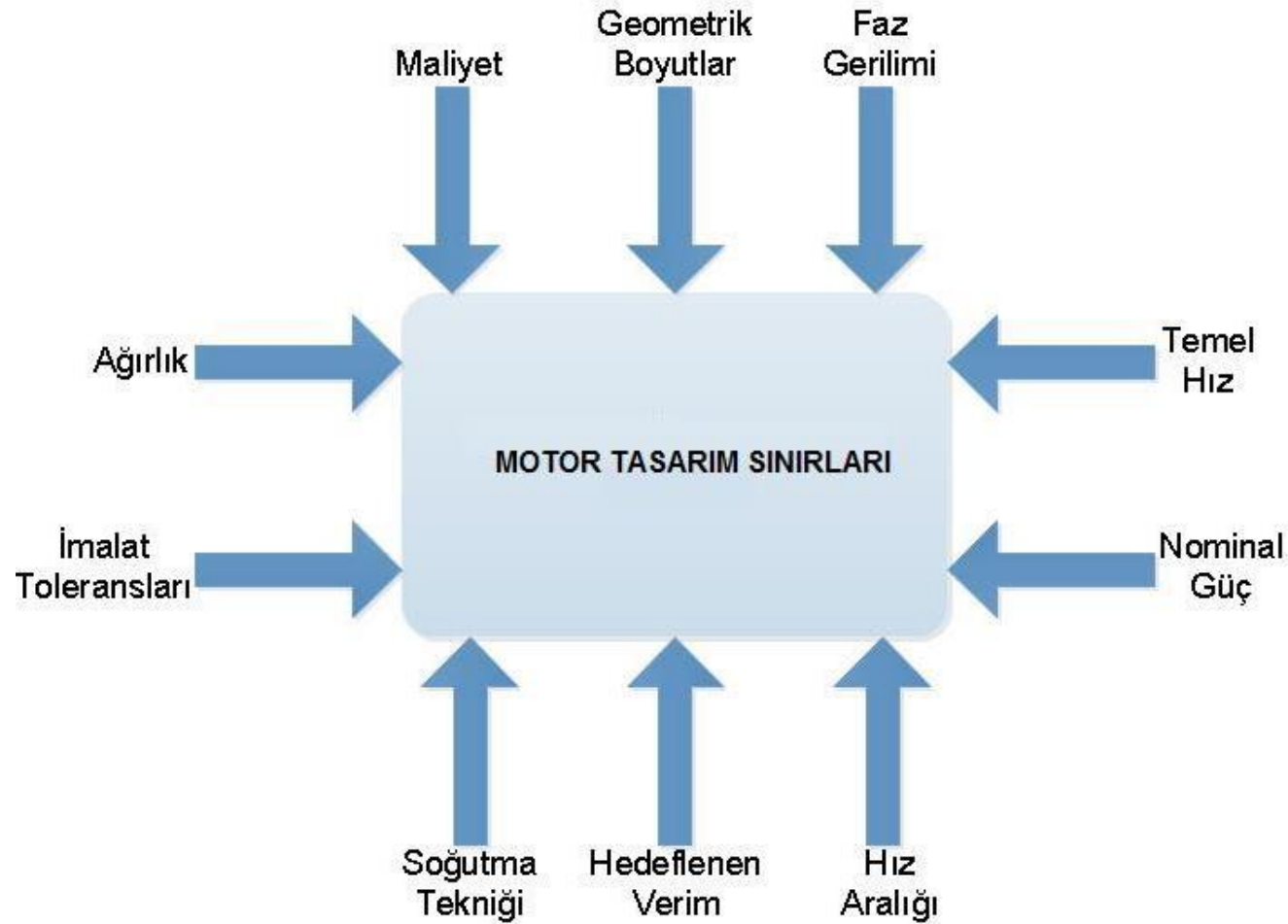


STATOR



ROTOR



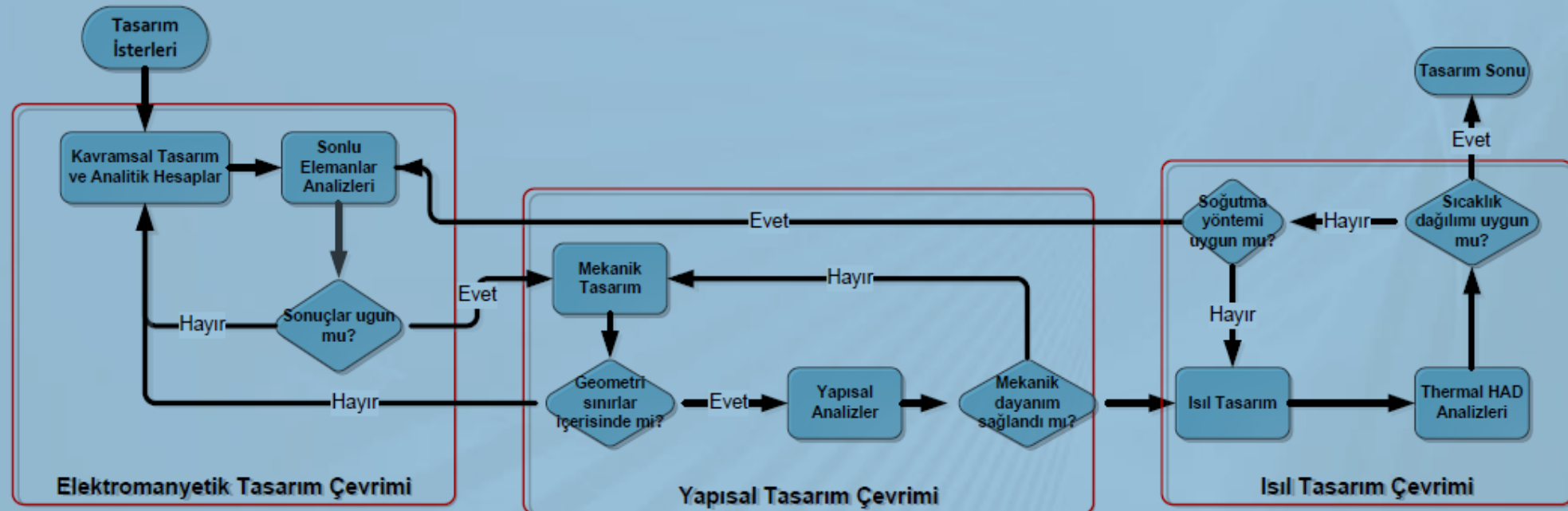


Standards Of Machine Design

Design Aim

- ▶ Motor Type And Configuration
- ▶ Motor Nominal And Maximum Power
- ▶ Supply Voltage Range
- ▶ Motor Starting And Nominal Torque Values
- ▶ Motor Maximum Torque
- ▶ Motor Nominal And Maximum Speed
- ▶ Number Of Poles
- ▶ Motor Target Efficiency
- ▶ Target Weight And Volume

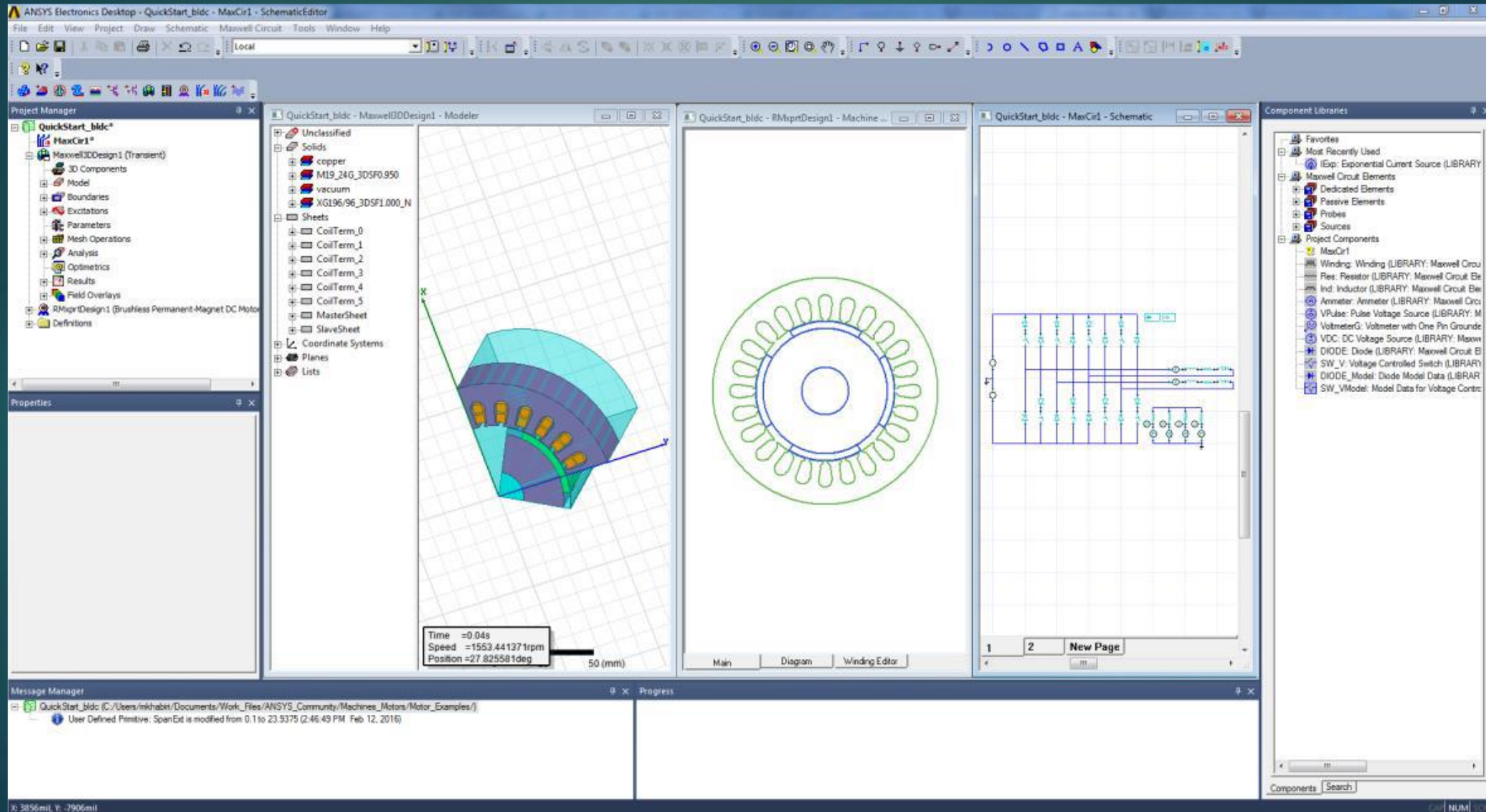
Electric Motor Design Process



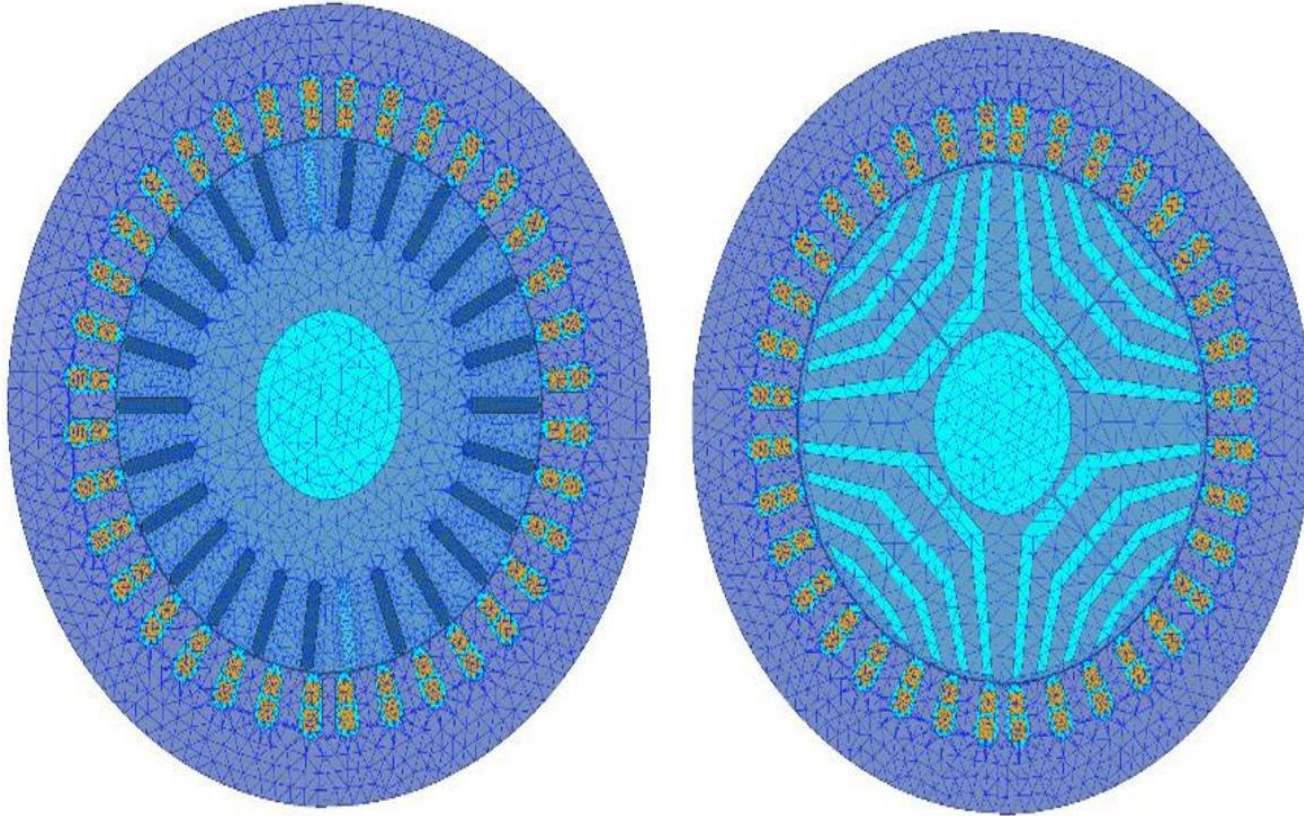
Machine Design Companies

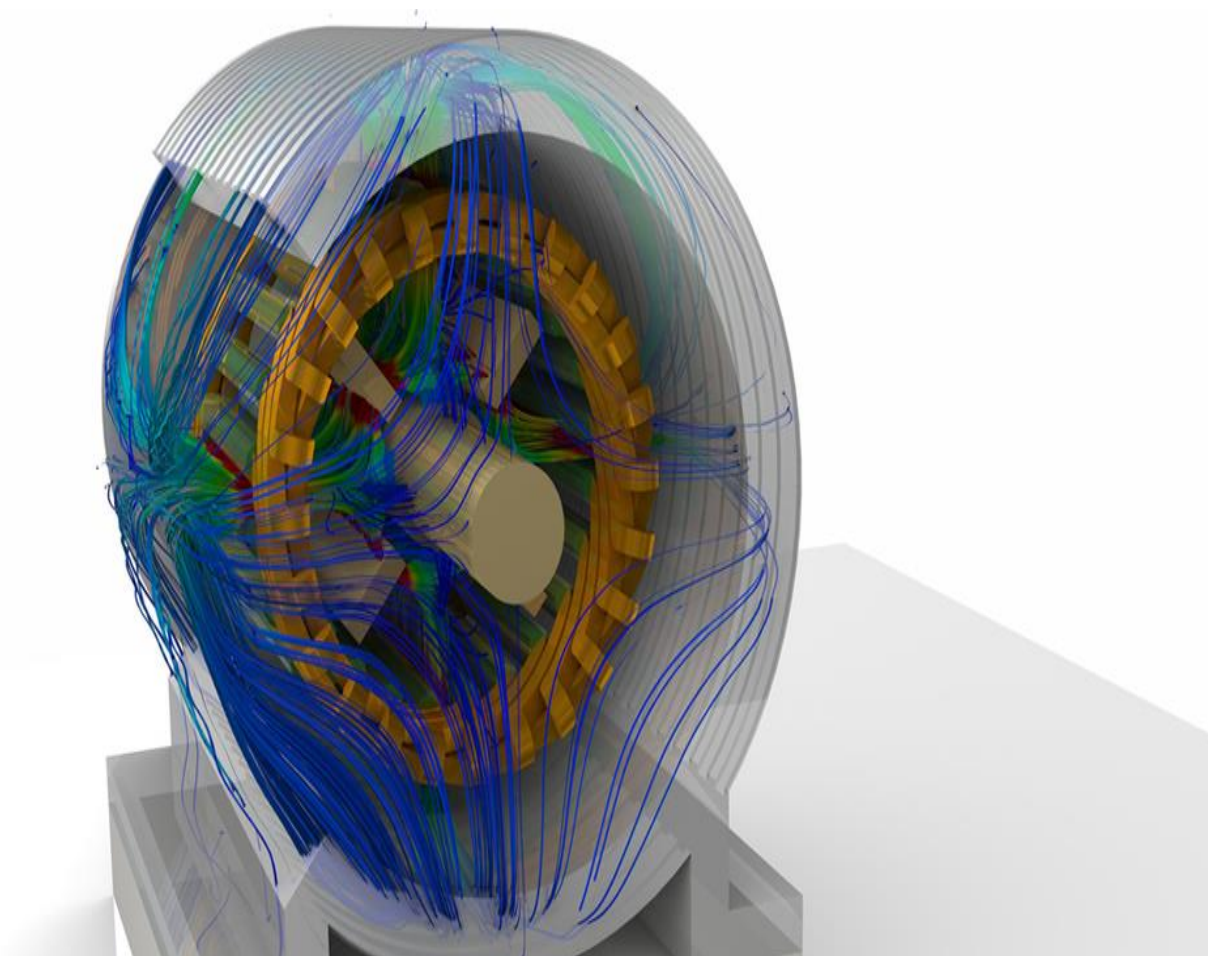
The ABB logo consists of the letters 'ABB' in a bold, red, sans-serif font. The letters are slightly stylized, with the 'A' and 'B' having a unique shape.The Schneider Electric logo features the word 'Schneider' in a black, sans-serif font, with 'Electric' in a smaller font below it. To the left of the text is a green square containing a white stylized 'E' logo.The ELK MOTOR logo features the word 'ELK' in a bold, black, sans-serif font, with 'MOTOR' in a smaller font below it. To the left of the text is a red stylized 'E' logo.The SIEMENS logo consists of the word 'SIEMENS' in a bold, black, sans-serif font, centered within a blue square.The GAMAK logo features the word 'GAMAK' in a bold, black, sans-serif font, with a small gear icon to the left of the text.The BEST logo consists of the word 'BEST' in a bold, white, sans-serif font, centered within a blue circle.The WAT logo consists of the word 'WAT' in a bold, white, sans-serif font, centered within a black circle.The AEMOT ELECTRIC MOTORS logo features the word 'AEMOT' in a bold, red, sans-serif font, with 'ELECTRIC MOTORS' in a smaller font below it. To the left of the text is a red stylized 'A' logo.

Computer Aided Design



Finite Element Method





ANSYS Electronics Maxwell

- 
- ▶ Research Assistant Furkan Muhammed KIRIKCI
 - ▶ mfurkankirikci@ktu.edu.tr
 - ▶ Electrical Machinery And Power Electronics Department
 - ▶ Ortahisar / TRABZON